

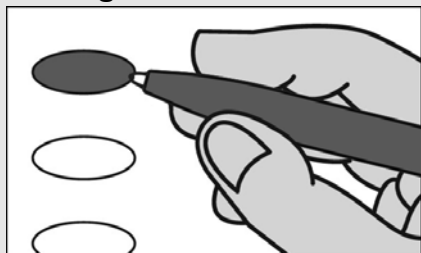
**Official Ballot
Presidential Primary Election
April 28, 2020**

BS NON 1

**State of Maryland, Carroll County
Non-Partisan Ballot**

Instructions

Making Selections



Fill in the oval to the left of the name of your choice. You must blacken the oval completely, and do not make any marks outside of the oval. You do not have to vote in every race.



Do not cross out or erase, or your vote may not count. If you make a mistake or a stray mark, you may ask for a new ballot.

**Board of Education
Vote for up to 2**

- Stephanie R. Brooks**
- Virginia R. Harrison**
- Marsha B. Herbert**
- Mary Kowalski**
- Donna Sivigny**

End of Ballot



